

front

Mood Board

reflect your life and style in your home's design.

By Lisa Peck, ASID and principal, LiLu Interiors, Inc.



Jennifer Shorto
graphic textiles,
jennifershorto.com

Stool/accent table,
Stray Dog Designs
straydogdesigns.com



» Truly remarkable interior design is the pure reflection of a homeowner's life and style. Everything a person likes (or dislikes) needs to be considered in order for it to work flawlessly. Design goes from dream to reality only when we start on the inside, so why not look for design options that match your personality and lifestyle? This month we're showcasing products ideal for active moms.

Picasso

Lamp, pillows and chairs, Dwell Studio
(several retail locations) dwellstudio.com



Place textiles, Blended Blue in
International Market Square

blendedblue.com

During her 20 years in the industry, Lisa Peck has collaborated with a host of people on a variety of projects that span the gamut of style. She is an expert at working within three-dimensional space, identifying hard materials and mixing them with textures and patterns. And while there's no idea too big or detail too small, Lisa understands the importance of protecting her clients from spending time and money on frivolous extras. Visit liluinteriors.com for more information.

LIFESTYLE: "Mommy a-go-go"
SHE IS: Ridiculously productive
SHE LIVES: Kenwood or Crocus Hill
STYLE: A healthy home, surrounded by high style and low-maintenance, crisp-but-eclectic taste
LOVES: Cooking, a good read, running, hosting dinner parties, family travel, farmers markets
SHOPS AT: J. Crew, Melly, Pink Champagne, Bumbershute
DINES AT: Butcher and Boar, Bachelor Farmer, Spoonriver



Biove drop-in tub (several retail locations), kohler.com



Kathleen
Waterloo painting,
kathleenwaterloo.com

PHOTOS: EMILY J. DAVIS/JOHNATHAN ADLER

Feng Shui Rater

Judging random home design trends by their energy.

This month's guest judge:
Katie Bassett of KBI Interior Design Studios

GOOD CHI

Mixing bold colors, textures and materials: 2012 brings unusual schemes and material combinations. Mix vibrant colors with different textures and materials (think natural stone, silk fabrics, wood, glass and metal) within a room to create balance. Wood-carved lamp bases are also big this year.

Functional home-office décor: Choose modern, contemporary, minimalistic styles of office furniture that are comfortable, simple and that boost creativity and production. Also consider a panoramic wall mural with an inspirational photo. According to feng shui principles, tabletop fountains in a workspace (which bring in a water element) will aid in prosperity. Paint this room green to boost your income and reduce stress.

Decorative mirrors: The Swiss Army knife of feng shui. Use them to attract energy, add light or expand an area. Large, ornate mirrors are popular this season.

One-dimensional lighting: Lighting should be layered, and should come from many different directions. Table lamps, sconces, overhead lighting and candles mix well together. Consider decorative lighting, like multifaceted crystal chandeliers. Think of lighting as a piece of jewelry in a room. (Fluorescent lights are, of course, a no-no.)

BAD CHI

Random color choices: While you should stick to colors that speak to you, don't just pull one out of a hat. Take into consideration whether the room you are decorating is an active (yang) or a quiet area (yin) and select colors that suit the room's purpose. Warm colors support activity, while cool colors support rest.

Clutter: Less is more. Create an environment that is clean, orderly and simplistic. People and energy should flow and move easily in a room. The open floor plan continues to be a must for creating an inviting place to gather and entertain.

Katie Bassett has been designing interior spaces for clients since 2004. She specializes in custom interiors with a fresh, creative twist. Having grown up and raised her family in Edina, Katie has chosen Edina as the location for her business. She lives in Wayzata with her husband, Marty, and dog, Toby. kbidesignstudios.com

CREATIVE DESIGN

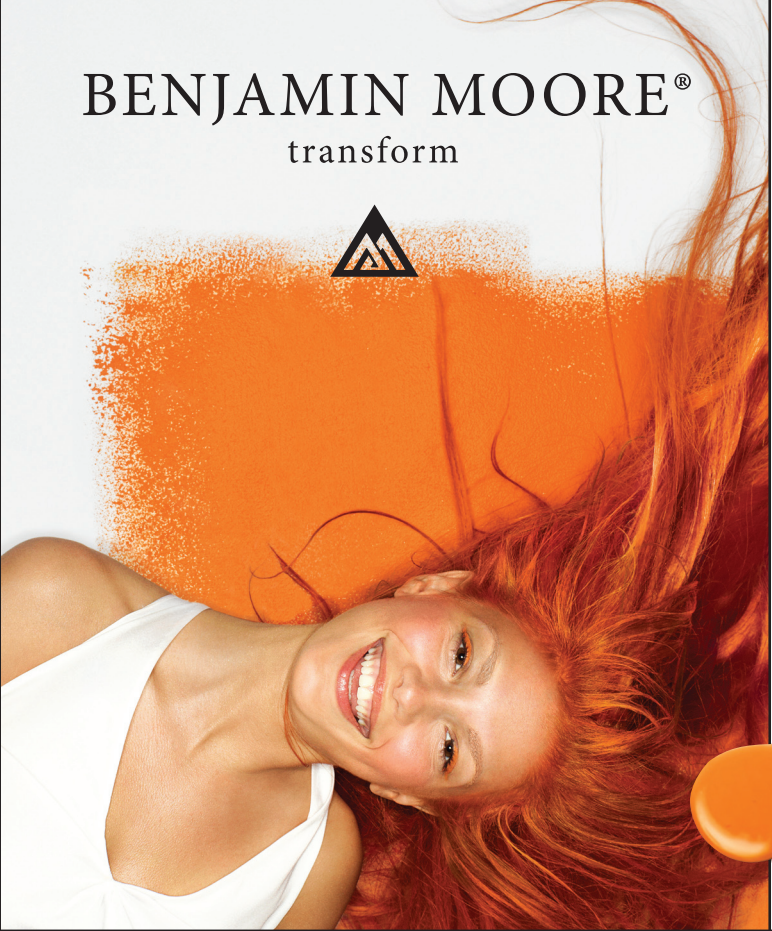
FOR LIFE, WORK AND THE SPACES BETWEEN.

SALA

SALA ARCHITECTS

For 29 years we've created places of beauty and purpose for an extraordinary range of people and projects.
LEARN MORE AT SALAARC.COM

BENJAMIN MOORE®
transform



Hirshfield's

the paint color:
tangerine melt

BUY ONE COLOR SAMPLE GET ONE FREE coupon at hirshfields.com/metro